

**7 INCH AV/TOUCH/PC SET
LCD COLOR RECEIVER**



OPERATION INSTRUCTION

CAUTIONS

Please read the manual carefully & completely you use the car audio system, and follow the cautions listed below.

1. In order to avoid fire or electric shock, don't expose the unit under rain or damp.
2. Don't open the unit for personal repairing. Any problems, please shut off the unit and contact with our supplier.
3. Don't expose the unit under dusty, oil or sunny.
4. Don't use cleaner to clean the unit, please use the fabric to clean the dusty.
5. Avoid dropping or impact to the machine and knock at the screen
6. For your safety, do not turn on, watch and operate the machine when you are driving, in some countries and regions, it may be against the laws.
7. Safe power supply: DC 12V (10V—14V)

TABLE OF CONTENTS

Specification.....	1
Key function.....	2
Remote control panel.....	3
Connection guide.....	4
Guide to install touch.....	5--11
Trouble shooting.....	12

SPECIFICATION

*Product: 7inch TFT LCD Monitor

*Display Size: 7inch

*Resolution: 800*480RGB

*Rated Voltage: DC11.5—14.5V(600Ma)

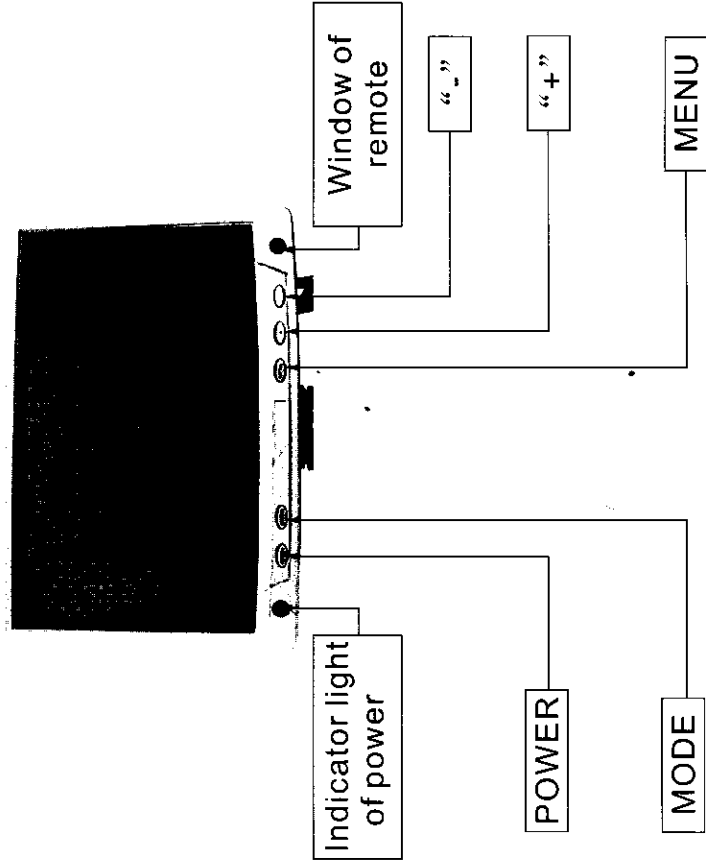
*Application Temperature: -20°C---+60°C

*AV Chromatic: PAL/NTSC (auto switch)

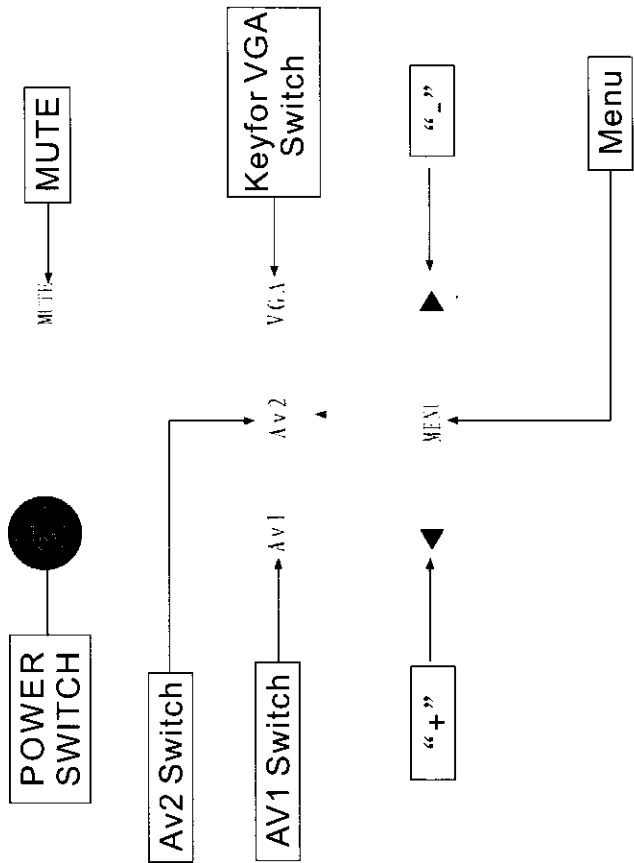
*Control: Bottom control/touch panel Control

*Feature: Bright color, clear picture, less energy consumption

Key function

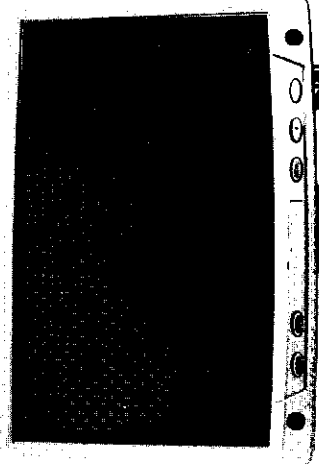


Remote control panel



TB 18 SIDS 02

Connection guide



10: USB Port

9: Port of input video (bulgy S Port)

3: Port of input VGA (hollow S Port)

8: Port of input video (hollow S Port)

2: Port to Connect with display (bulgy S port)

1: Port to Connect with PC port

- 4: +12V Red
- 5: Ground Black
- 6: VIDEO1 Yellow
- 7: VIDEO2 Yellow

2.2 Installing and Using TouchKit for WindowsXP / XP Tablet PC Edition

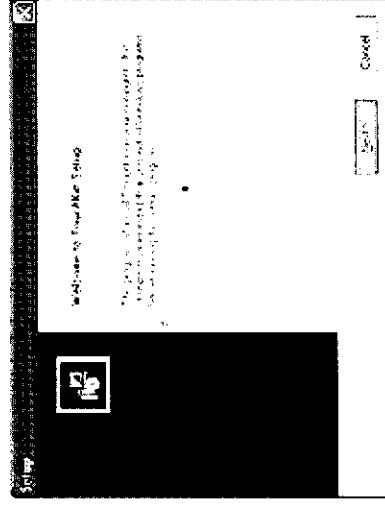
TouchKit is software, which contains drivers of the touch panel controllers for the specified communication connectors, RS232, PS/2 and USB, and another utility.

Configuration support

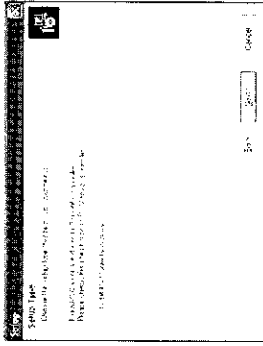
The calibration and draw test of touch panel are done by this utility. Besides, users can add or remove for new RS-232 touch panel device.

Follow these steps to install TouchKit.

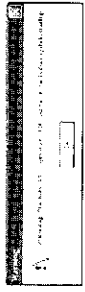
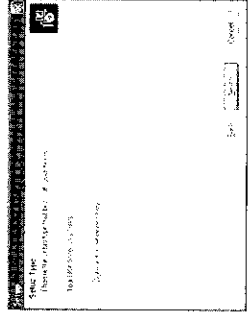
- 1.Put the TouchKit CD to CD-ROM.
 - 2.Change directory to Win2000_XP.
 - 3.Double click the Setup.exe, then windows starts to run the installation program.
- Notice that do not plug the USB controller on the system before the installation has been finished.
- 4.Just click [Next >] button to continue installation.



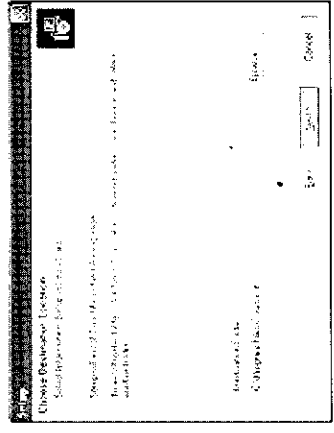
5. Check the check box if PS/2 touch controller is to be installed. The default setting is unchecked. Then press [Next >] to continue installation.



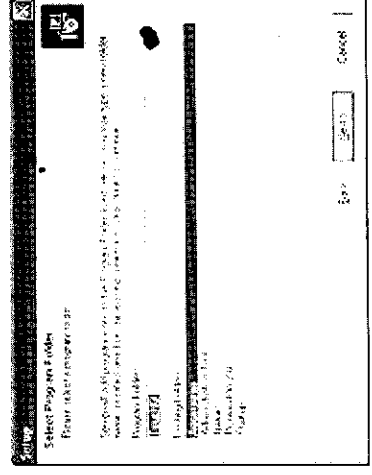
6. Choose the setup type that best suits your needs. There is a TouchKit accessory utility for choosing, Auto 4Pts Calibration Utility. Users can install the utility they want by checking the box. Then press [Next >] to continue installation



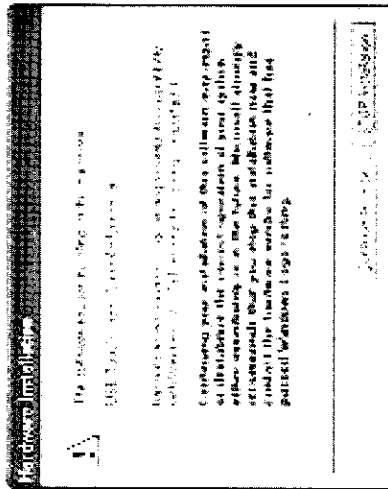
System will give you a warning, if users check the check box, 7. Select the appropriate folder where set-up files will be installed, Then press [Next >] to continue installation.



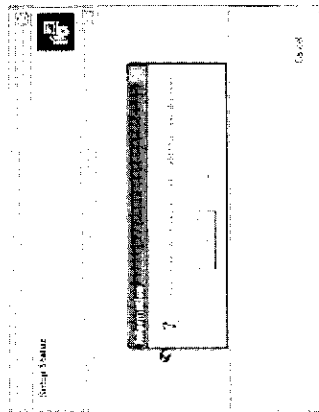
8. Then type in the name of program folder for TouchKit or press [Next>] to continue. There will be a default name for it.



During Installation, the Touchkit controller driver will be installed automatically. Windows XP will prompt a warning message before driver certification. Now, press [Continue >] to continue installation.

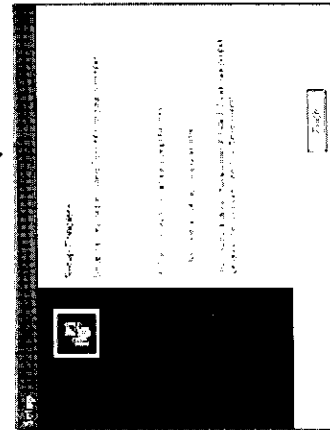


During installation, the setup program will scan COM port for RS232 Touchkit controller. Once the controller was scanned, the setup program will display a dialog as.



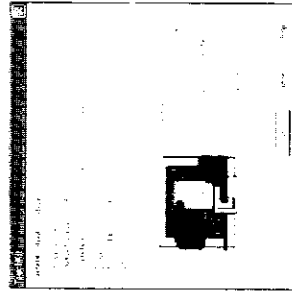
Click Yes to add the controller on the specified COM port automatically.

9. Windows is copying files to disk and the setup is complete. After finish the installation, if PS/2 touch controller is installed, it needs to reboot the computer.

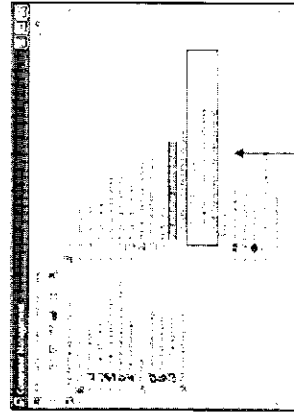


10. Setup is complete. After TouchKit installation, the USB device will be found automatically as soon as it was plugged into the computer. Then users can see the new device on the application program window. And, the program will remove the USB device automatically as soon as it was unplugged.

A dialog as.



11. Users can check the situation of controllers in the Device Manager. If the controller is set up well, there will be messages as the following picture. A dialog as.



TouchKit controllers works well

If you suspect something wrong immediately switch power off. Do not use the unit in abnormal condition, for example without sound,

Or with smoke or fuel smell can cause fire or electric shock, Immediately stop using it and call the store where you purchased it. Never try to repair the unit yourself because it is dangerous to do so.

The phenomena listed below do not indicate that there are

No electrify

wrong connection with polarity(+,-)?
check the line and insert the S Port again.

Dark picture

The brightness and contrast are not adjusted properly?
please adjust menu setting again.

No touch

no software of touch?
reinstall the software of touch

Deflective touch

No enough emendation
do emendation with 4or 25points again